



**DESCRIPTION:**

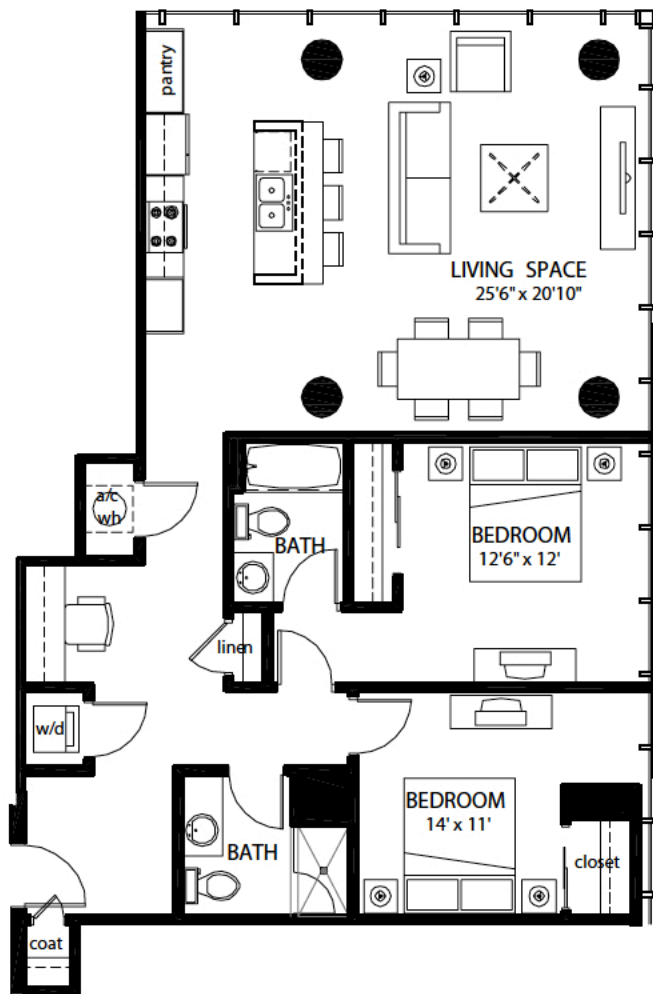
A two-bedroom, two bathroom corner unit. Select units will be available with either glass walls or balconies offering views of Ybor City.

All dimensions are approximate and subject to change.

Air conditioned square footage is calculated from the outside perimeter of the exterior walls and half of the demising wall.

Based on building material changes, prices and availability, features and specifications are subject to change without notice. The developer reserves the right to alter the design, vary feature positions or substitute materials of comparable value as deemed advisable or necessary by Builder or Architect.

Prices, plans, dimensions and specifications subject to change without notice. Void where prohibited by law.



**DOWNTOWN RESIDENCES WITH UNEXPECTED AMENITIES**

INFORMATION 813-226-0988

VISIT [grandcentralatkennedy.com](http://grandcentralatkennedy.com)



ORAL REPRESENTATIONS CANNOT BE RELIED UPON AS CORRECTLY STATING REPRESENTATIONS OF THE DEVELOPER. FOR CORRECT REPRESENTATIONS, MAKE REFERENCE TO THIS BROCHURE AND TO THE DOCUMENTS REQUIRED BY SECTION 718.503, FLORIDA STATUTES, TO BE FURNISHED BY THE DEVELOPER TO A BUYER OR LESSEE.